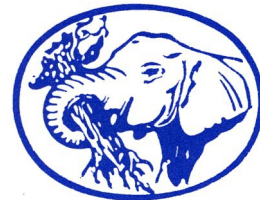


ellettari

Officine Meccaniche



E 6x6

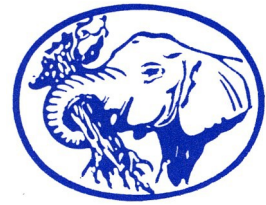
Pompa per fanghi
Hydraulic mud pump
Pompe à boue

ellettari s.r.l. - Via Roma, 5 – 43100 Madregolo di Collecchio (Parma) Italia
Tel. +39.0521.800743

www.ellettari-group.it e-mail: info@ellettari-group.it

E 6x6

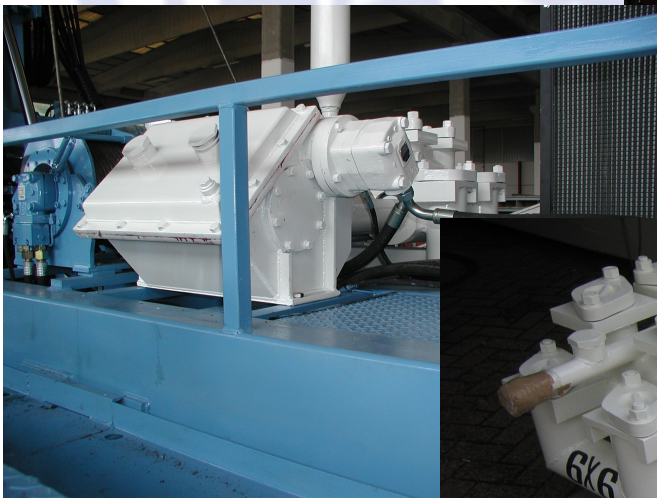
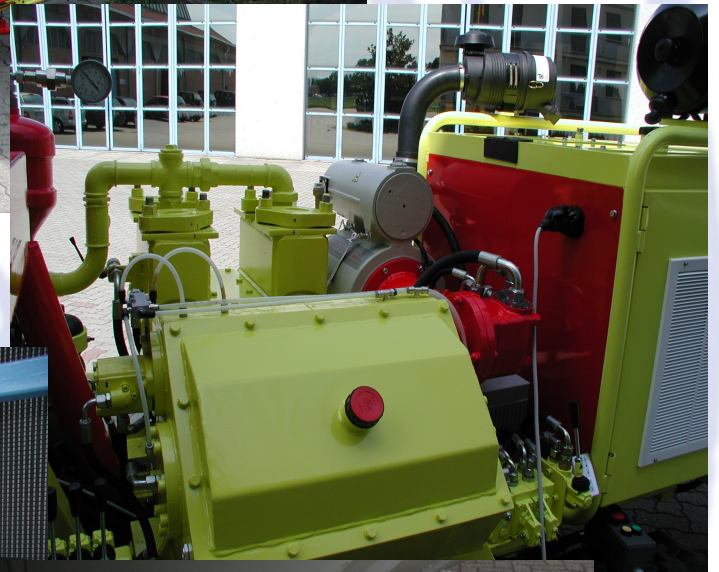
Pompa per fanghi
Mud pump



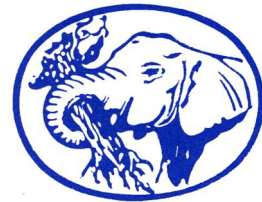
WATER RESEARCH
GEOLOGICAL FINDINGS
CORE DRILLING

RICERCHE IDRICHE
SONDAGGI GEOLOGICI
CAROTAGGI

RECHERCHE D'EAU
ESSAI DU SOIL



E 6x6



TECHNICAL DETAILS MUD PUMP TRADITIONAL PISTONS PUMP TYPE DUPLEX 6x6

- Cylinders body and transmission case made of laminated steel, welded.
- High capacity roller bearing fitted on both crankshaft sides.
- Screwed valve pot covers for quick inspection and replacing of the wearing parts (valves, seats).
- Lubrication of bearings and crossheads.
- ball valves and valve seats.
- The motion drive is obtained by an orbital hydraulic motor.

Caractéristiques techniques Pompe à boue mouvement mécanique type Duplex Modèle E6x6

- Structure entièrement en acier soudé.
- Arbres de transmission avec roulements de support.
- Vannes à sphère pour le décharge et l'aspiration.
- Moteur hydraulique pour l'actionnement.

DETTAGLI TECNICI POMPA FANGHI AD AZIONAMENTO MECCANICO TIPO DUPLEX Modello EG6x6

- Struttura in acciaio elettrosaldato.
- Alberi di trasmissione poggianti su cuscinetti volventi.
- Tappi valvole con sistema di blocco ad apertura rapida per una facile ispezione.
- Valvole a sfera di facile sostituzione.
- Trasmissione idraulica del movimento mediante motore idraulico.

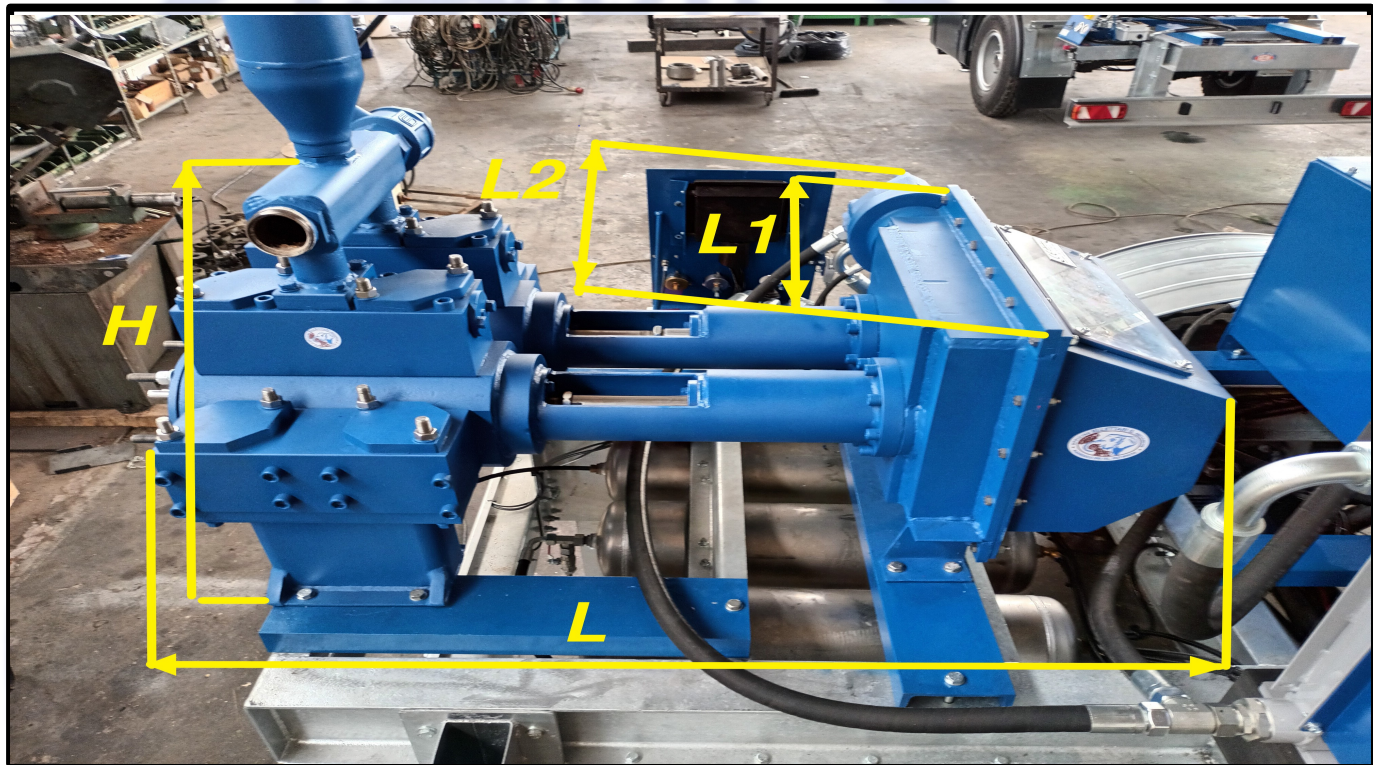
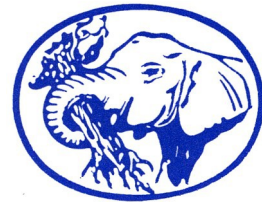
Corsa Stroke Course de piston	Press.Idraulica/Hydr. oil pressure Pression de huile bar	Portata olio Oil displacement Huile necessaire dm ³ /min	Pistoni a doppio effetto Double effect pistons Pistons à double effet	Weight Peso Poids kg
6"	200	180	2	700
LINER Camicia CHEMISE	MUD PRESSURE Pressione fango PRESSION DE BOUE	MUD DISPLACEMENT Portata fango DEBIT DE BOUE	Diesel Engine power Potenza motore PUISSANCE du Moteur	JACK SHAFT Pistoni PISTONS
Diam.	BAR	L/MIN	HP	Colpi Stroke /min
6"	23	900	100	90
5"	32	620		
4 1/2"	40	510		
4"	51	400		

* I dati tecnici riportati sono indicativi, L'ELLETTARI si riserva il diritto di modificarli opportunamente senza alcun preavviso.

* Specification shown are only indicative, ELLETTARI reserves the right to alter them if necessary without prior notice.

E 6x6

Dati dimensionali
Dimensional data



Dimensioni/ size/ dimension

L = 1400mm (max lunghezza/ length/ longueur)

L1= 800mm (max larghezza/ wide/ largeur)

L2= 920mm (con motore/with motor/ avec moteur)

D1= 2.5inch /63mm (uscita/ out-let / decharge)

D2= 5inch/127mm (aspirazione/suction/ aspiration)